

# USER'S MANUAL OF VILLA JOUTSENO



Basic information of the modern floating house, Villa Joutseno: 61.5 m<sup>2</sup>, 2 rooms + kitchen + alcove + 2 toilets + sauna + 2 bathrooms, unobstructed lake view, two floors, large terrace, pontoon, 4 + 2 beds, sauna opens straight to the Lake Saimaa. See more: [www.assosinhelmet.com/villa-joutseno](http://www.assosinhelmet.com/villa-joutseno) .

Welcome to our lovely Villa Joutseno. We wish you relaxing moments in beautiful surroundings. By following these instructions, your visit will be easy and safe.

## Arrival

Villa Joutseno is located in Imatra's Lammassaari at the address of Lammassaarentie 30. You can easily find it by following the signs for the Imatra spa. When we reach the spa, just continue straight to the marina. Then continue past the restaurant for about 50 meters and Villa Joutseno is visible on the right. Villa Joutseno is the apartment on the right side of the semi-detached house. The key to the outer door is located in the pontoon gate. Its code is given to guests before arrival. When the key is taken out of the case, it should be closed and the code mixed. Outdoor shoes and smoking are not allowed inside the house. Pets must be agreed in advance. The house's lighting works either from the control panel next to the front door or from separate light switches.



It is important to understand that Villa Joutseno is a floating house, so special care should be taken during the visit. We do not recommend going on the ice. Everyone moves around the house at their own risk. This User's Manual is part of the rental agreement.

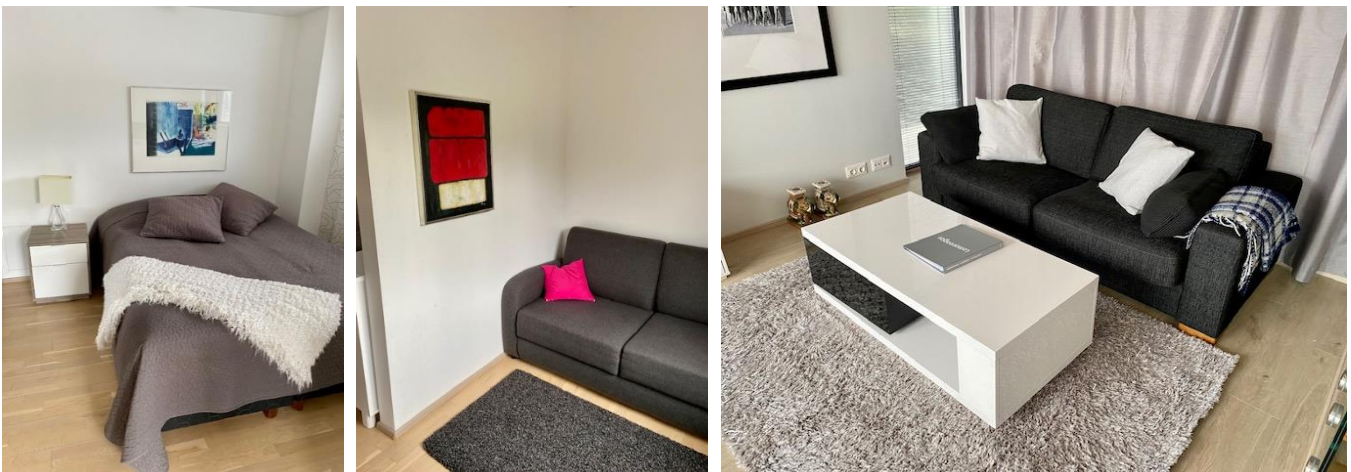
## Villa Joutseno's equipment

The house has all the furniture and equipment of a normal house designed for year-round use. The kitchen is fully equipped and has an induction stove, oven, refrigerator, microwave, dishwasher, coffee maker, kettle, toaster, crockery and cutlery for 10 people, etc. The refrigerator is always on and set to the right temperature. There is a 50" Samsung TV in the house and a smaller Philips upstairs. TVs work in an antenna network. The equipment also includes e.g. washing machine, vacuum cleaner and drying rack.



## Overnight stay

Villa Joutseno has 4+2 beds. The double bed is located in the master bedroom upstairs. There is a sofa bed in the living room and a small folding sofa in the hallway upstairs. Beds must not be slept in without bed linen.



## Heating, air conditioning, hot water, heating and sauna

The house has underfloor heating, which works with electricity, and mechanical ventilation. There is also an electrically heated water heater. Heating and ventilation are set for year-round use. The capacity of the hot water storage tank is limited, so excessive hot water consumption should be avoided so that there is enough warm shower water for all saunas. The living room also has an air heat pump that can be used for additional heating or cooling. Its use is simple. Switch on (ON) and adjust the desired temperature with the arrow keys. The pump starts slowly and keeps the room at the desired temperature. When leaving, the pump is closed (OFF).

The electric stove is turned on from the control panel. The temperature on the left is adjusted and the time on the right. When leaving, the heater is switched off. Disposable paper cloths must be used in the sauna. Excessive or unnecessary consumption of hot water should be avoided so that there is enough hot water for all saunas. You can go straight out of the sauna and swim. The water is deep, so be especially careful with small children. There are swimming stairs at the end of the terrace. When coming back to the sauna from swimming, you should rinse your feet before entering the sauna. After sauna, the sauna room is rinsed with cold water and the paper cloths are put in the trash.



## Services, waste management and more

The equipment of the outdoor terrace includes a small set of chairs, the cushions of which are in the upstairs wardrobe. The house also has a high chair and a bed for infants. After use, the cushions should be put back in the wardrobe to protect them from the rain. Bed linen and towels must be ordered in advance when renting. Grilling on the upper terrace is prohibited due to fire safety. Villa Joutseno's waste points can be found in the harbor and in the winter time centrally near the restaurant. The Lammassaari area has plenty of services during the summer, such as restaurants and cafes. Across the street is the year-round Imatra Spa. There are also many leisure sports services nearby, and Imatra offers all the city's services and attractions.

## Exit and potential damages

When the visit is over, the key must be put back in the key cabinet and the code messed up. When leaving, make sure that all three front doors are locked and the lights are turned off. Garbage is taken to the port's waste points. The agreed schedules must be strictly followed so that the cleaning service works according to the agreed schedules. The renter is responsible for damages in the house against the actual costs. The best way to handle the matter is for the guest to take a picture of the possible damage and send it to us or ask for a cleaner to be there, so that we can quickly fix it for the next guest. Please be careful with red wine. We hope that in Villa Joutseno red wine would only be enjoyed outdoors. Washing carpets and furniture is slow and often expensive.

## Contact information

In any problem situation, you can contact Natalia (045 350 9691), who is responsible for house cleaning and linen maintenance. We charge for all additional services separately.

See also our other holiday destinations at: [www.assosinhelmet.com](http://www.assosinhelmet.com) .

The Villa Joutseno team wishes you a pleasant and comfortable stay! (21.07.2024)